



# ALKE

## Heating Technology



### Black Tube Heaters



### HEATING

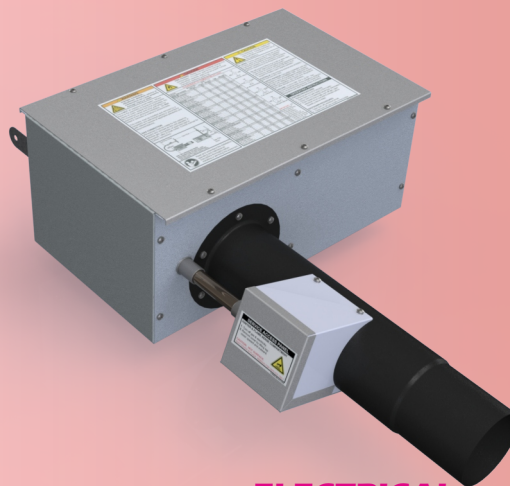
# Gas-fired, 2 stage, infrared heaters

## AK-HL Series

The AK-HL Series, packed with quality features, represents today's most energy efficient line of infrared tube heaters. Our patented two stage technology, incorporated into the AK-HL Series, provides more comfort while saving valuable energy dollars. In addition, the highest quality materials and construction features ensure years of reliable and efficient operation. No other infrared heater can match the performance and quality of the AK-HL Series.

### Product Features:

- Inputs of 19.0 to 60.0 kw
- Available in Tube Lengths of 6710 mm to 21335 mm
- Coated Titanium or Aluminized Combustion Chamber
- Coated Aluminized or Optional Economy Hot Rolled Steel Radiant Tubes
- Patented Two-Stage Technology
- Highly Polished Aluminum Reflectors
- Stainless Steel Burner
- Spark Ignition System
- Enameled Control Box
- Operational Indicator Lights
- Optional #3 Brushed Stainless Steel Control Box
- Optional 'U' or 'L' Configuration



### ELECTRICAL

- 230V, 50Hz, 60Hz
- 1.0A starting, 0.6A running

### CONTROLS

- 230V thermostat control
- 24V optional control

### IGNITION/SENSE

- Spark ignition
- Single or dual sense

### TUBE CONSTRUCTION

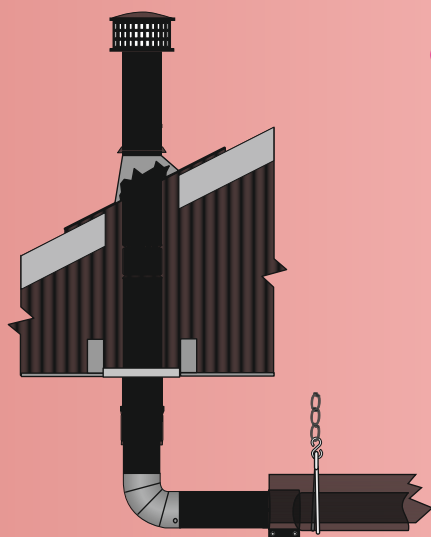
- 101.6mm x 3048mm
- Labor saving, interlocking swaged tube design



### PRODUCT SPECIFICATION

Input Range:	19.0 - 60.0 kW
Lengths:	6100 - 21335mm
Gas Type:	Nat(G20-I2H), D-Nat(G25-I2L), LP(G31-I3P)
Radiant Tube Options:	Commercial, Industrial, Poultry, Swine
Certifications:	CE, AU, RU, NZ, RS



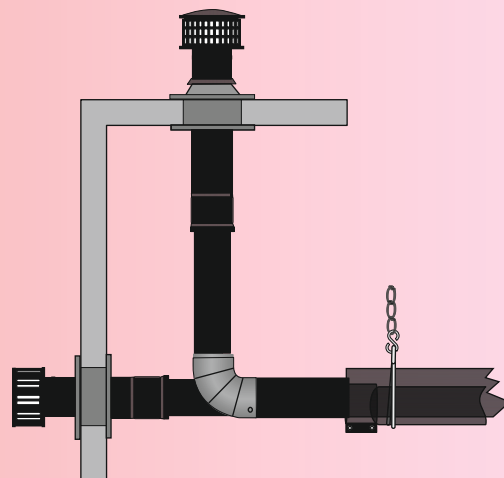


### COMBUSTION AIR

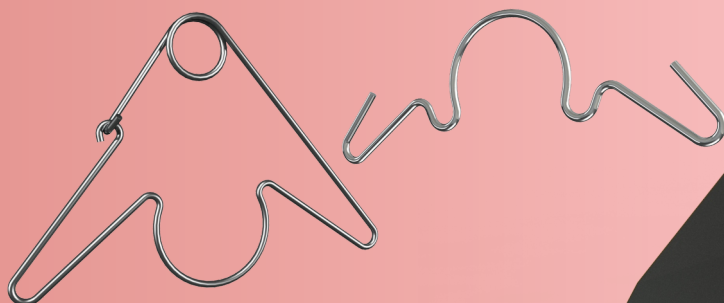
- Equipped for ducted air intake from roof or sidewall

### VENTING

- 100mm single
- Optional 150mm common (with single thermostat)

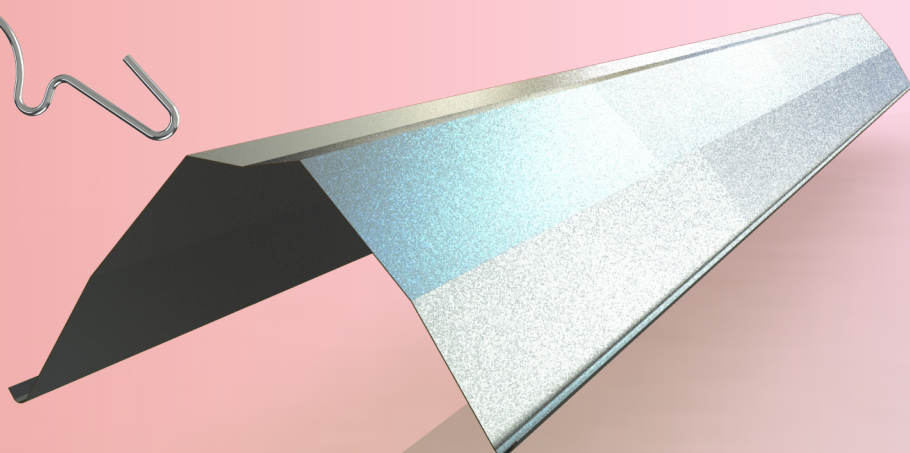


Model Number	High Fire Rate	Low Fire Rate	Length (Installation Kit)			Combustion Chamber	Radiant Tubes
AKHL-20	20 kW	15 kW	6m (20-kit)	9m (30-kit)	12m (40-kit)	Aluminized	Aluminized or HRT
AKHL-75*	22,1 kW	15,6 kW	6m (20-kit)	9m (30-kit)	12m (40-kit)	Aluminized	Aluminized or HRT
AKHL-25	25 kW	15 kW	6m (20-kit)	9m (30-kit)	12m (40-kit)	Aluminized	Aluminized or HRT
AKHL-100*	29,4 kW	20,8 kW	X	9m (30-kit)	12m (40-kit)	Aluminized	Aluminized or HRT
AKHL-30	30 kW	20 kW	9m (30-kit)	12m (40-kit)	15m (50-kit)	Aluminized	Aluminized or HRT
AKHL-35	35 kW	30 kW	X	12m (40-kit)	15m (50-kit)	Aluminized	Aluminized or HRT
AKHL-40	40 kW	30 kW	12m (40-kit)	15m (50-kit)	18m (60-kit)	Aluminized	Aluminized or HRT
AKHL-150*	44,1 kW	31,2 kW	12m (40-kit)	15m (50-kit)	18m (60-kit)	Titanium & Aluminized	Aluminized or HRT
AKHL-45	45 kW	30 kW	12m (40-kit)	15m (50-kit)	18m (60-kit)	Titanium & Aluminized	Aluminized or HRT
AKHL-50	50 kW	35 kW	12m (40-kit)	15m (50-kit)	18m (60-kit)	Titanium & Aluminized	Aluminized or HRT
AKHL-50	50 kW	35 kW	X	X	21m (70-kit)	Titanium & Aluminized	Aluminized or HRT
AKHL-175*	51,5 kW	36,4 kW	15m (50-kit)	18m (60-kit)	21m (70-kit)	Titanium & Aluminized	Aluminized or HRT
AKHL-55	55 kW	40 kW	15m (50-kit)	18m (60-kit)	21m (70-kit)	Titanium & Aluminized	Aluminized or HRT
AKHL-60	60 kW	45 kW	15m (50-kit)	18m (60-kit)	21m (70-kit)	Titanium & Aluminized	Aluminized or HRT



### REFLECTOR

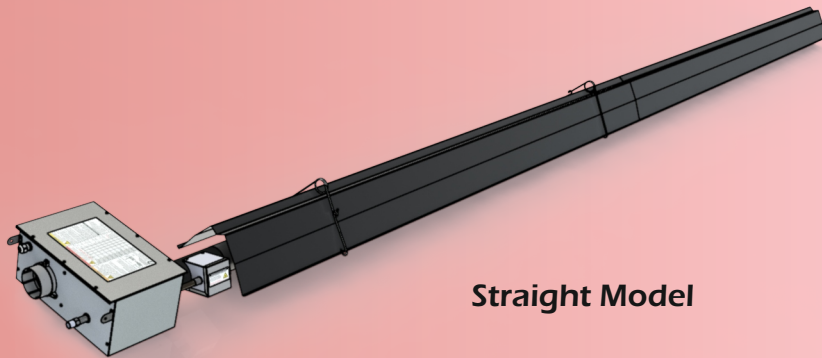
- Highly polished aluminum
- End caps included
- 0° – 45° rotatable angle
- Tension springs



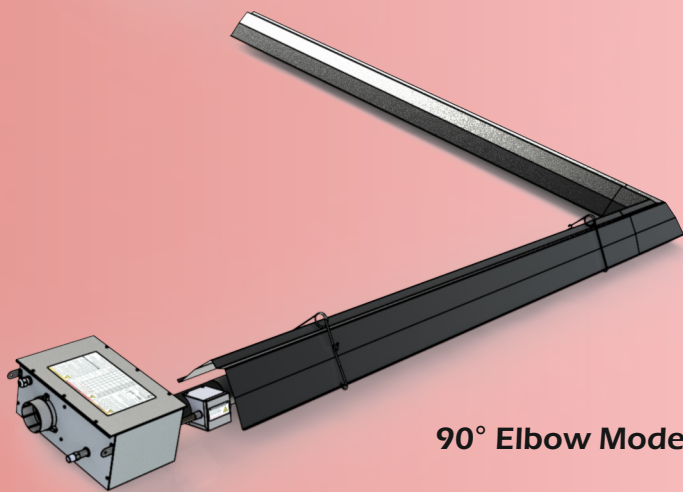




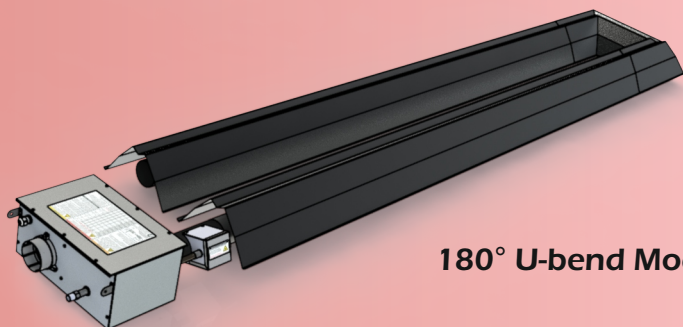
# Configurations



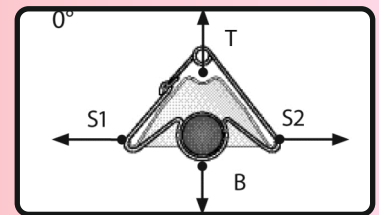
**Straight Model**



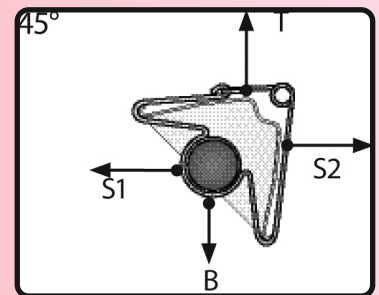
**90° Elbow Model**



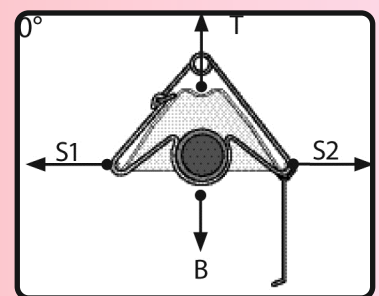
**180° U-bend Model**



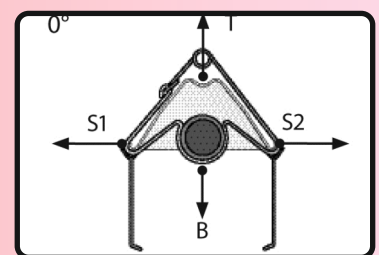
**0° Mounting Angle**



**45° Mounting Angle**



**0° w/1 Side Shield**



**0° w/2 Side Shields**

## **KIT CONTENTS**

- All hangers & couplers
- Reflector end caps
- Turbulator baffle(s)



ALKE BV - Industrielaan 11a - 3925 BD Scherpenzeel - The Netherlands

☎ +31 (0)33 277 3824 📠 +31 (0)33 277 3080 ✉ info@alke.nl

🌐 [www.alke.nl](http://www.alke.nl)