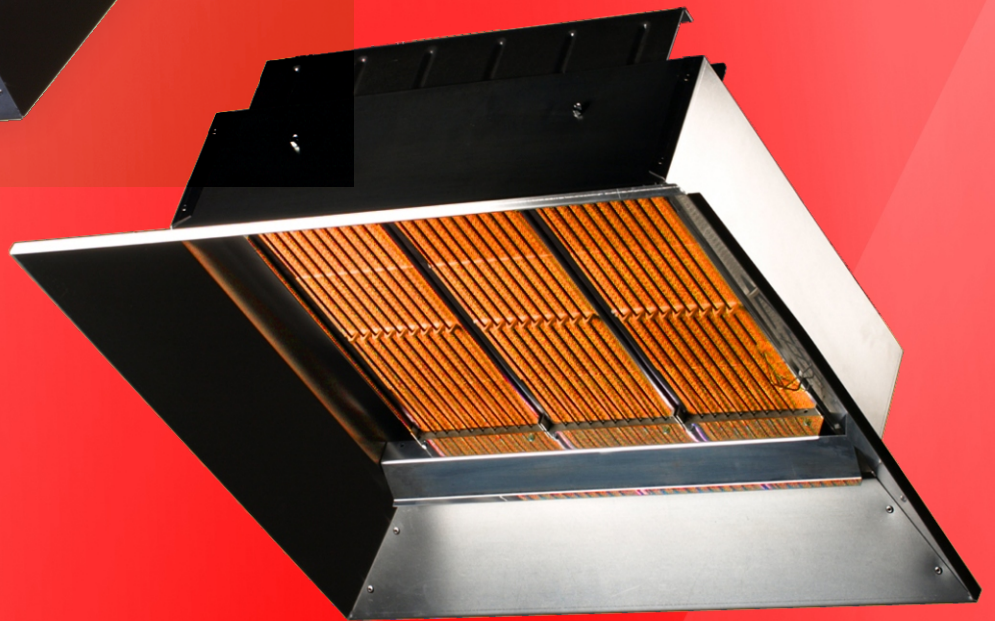




ALKE

Heating Technology



PLE Industrial Heater

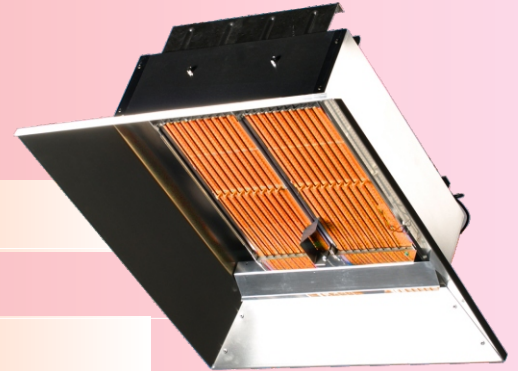


HEATING



PLE series

Industrial Infrared Heater



SPECIFICATIONS

kW Range:	8,8 - 46,9 kW
Gas Type:	NG: G20, G25 / Prop: G31
Certification:	CE Certified
Gas Connection:	½" BSP female
Burner Pressure:	15 mbar(NG)/25 mbar(prop)
Inlet:	20-50 mbar(NG)/30-50mbar(prop)
Voltage:	230V, 50 Hz.

Features

- Exclusive Ceramic burner provides Maximum infra-red radiation
- Stainless steel rods increase heat temperature and Efficiency
- Aluminum reflector design for optimal Radiation reflection
- Easy to operate and Maintain
- Environment friendly and Silent
- Direct spark ignition
- CE Certified

AVAILABLE PLE MODELS

MODEL*	GAS TYPES	INPUT (kW)		DIMENSIONS			WEIGHT (Kg)	REC. MTG HEIGHT**[H]	CLEARANCE TO CUMBUSTIBLES***			
		Hs	Hi	H	L	W			SIDE [A]	BACK [B]	TOP[C]	BELOW [D]
PLE 9	G20, G25, G31	8,8	7,9	42 cm	45,5 cm	71 cm	8,2	370 cm	>70 cm	>45 cm	>70 cm	>175 cm
PLE 18	G20, G25, G31	17,6	15,8	42 cm	62,0 cm	71 cm	12,2	440 cm	>70 cm	>45 cm	>110 cm	>200 cm
PLE 30	G20, G25, G31	29,3	26,4	42 cm	78,5 cm	71 cm	16,3	590 cm	>115 cm	>75 cm	>130 cm	>240 cm
PLE 36	G20, G25, G31	38,1	34,3	42 cm	95,5 cm	71 cm	20,4	740 cm	>115 cm	>75 cm	>130 cm	>300 cm
PLE 45	G20, G25, G31	46,9	42,2	42 cm	112,0 cm	71 cm	24,5	840 cm	>125 cm	>80 cm	>160 cm	>325 cm

* Specify full model number when ordering (Model-Gas-Voltage). Example: PLE30-G20-230V

** Mounting heights are recommended and provided as a guideline only. Actual conditions may dictate variations from the above data

*** Always maintain the published clearances to combustibles and place signs where necessary in accordance with local standards.



ALKE BV - Industrielaan 11a - 3925 BD Scherpenzeel - The Netherlands

☎ +31 (0)33 277 3824 📠 +31 (0)33 277 3080 ✉ info@alke.nl

🌐 www.alke.nl