



ALKE

Heating Technology



MEGASUN Hybrid 2-EID2G

Canopy Gasbrooder



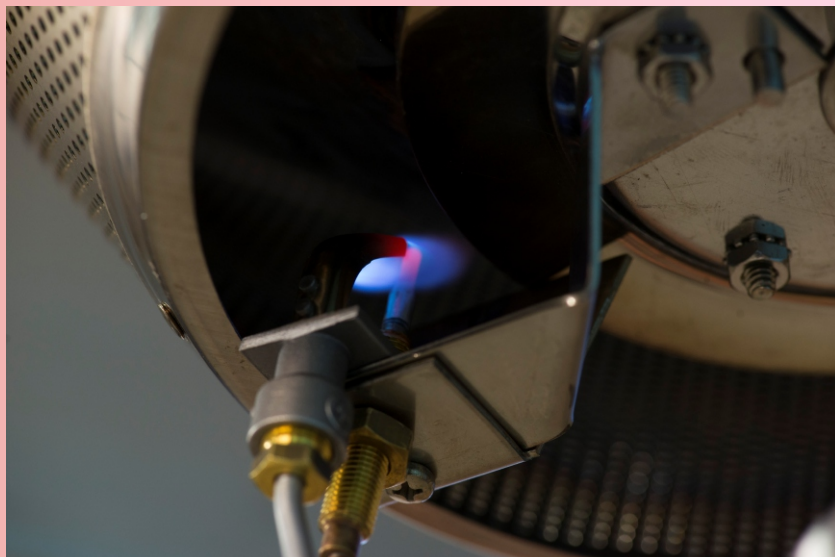
HEATING



Megasun

Megasun TE WV/TH

An individual, non-electric, fully automatic ON/OFF control with integral thermostat, which operates on millivolts generated by the pilot. No electrical supply is needed. Integral thermostat features a wide temperature range for easy adjustment. 100% gas safety shut-off valve.

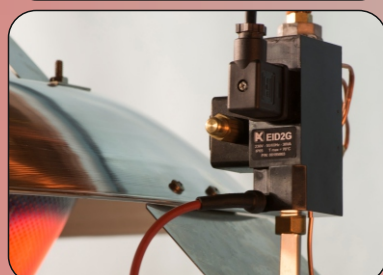
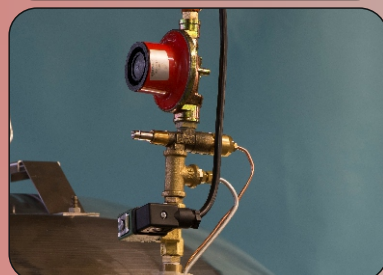
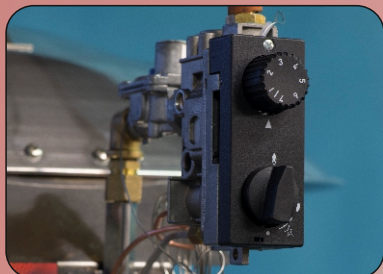


Megasun TE WV/MK230V - TE WV/MK24V

For single or multi-zone installations using central or multiple thermostats, available in 24V or 230V version. The 24-volt AC, zone-type control also can operate on DC voltage as a back up. The gas valve includes a built-in regulator. A 24V or 230V power supply is required. Brooder can be operated by a thermostat, computer or an environmental controller. 100% gas safety shut-off valve.

Megasun EID2G

Designed for single or multi-zone installations using one or more thermostats. A Zone Control is required to provide a 230-Volt power supply to each brooder. The burner is controlled with a Electronic Ignition Device (EID) switch, which is designed to provide 100 percent gas shut off of the main valve in the event that the main burner flame is not sensed.



WVLMK & WVLTB

Pilot flame - Solenoid valve
Pilot flame - Thermostat

Gas	P (mBar)	Cap. (kW)	gr/h	m3/h	Weight(Kg)
Propane	30-100	12,4	880	-	6,8
Nat.Gas	20-100	11,7	-	1,15	6,8

EID2G

Electronic Ignition

Gas	P (mBar)	Cap. (kW)	gr/h	m3/h	Weight(Kg)
Propane	30-100	12,4	880	-	6,8
Nat.Gas	20-100	11,7	-	1,12	6,8

In case there is a power failure you can overrule the EID2G block, and ignite the heater manually!



ALKE BV - Industrielaan 11a - 3925 BD Scherpenzeel - The Netherlands

+31 (0)33 277 3824 +31 (0)33 277 3080 info@alke.nl

www.alke.nl