



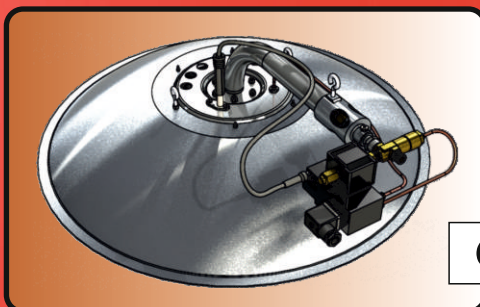
ALKE

Heating Technology



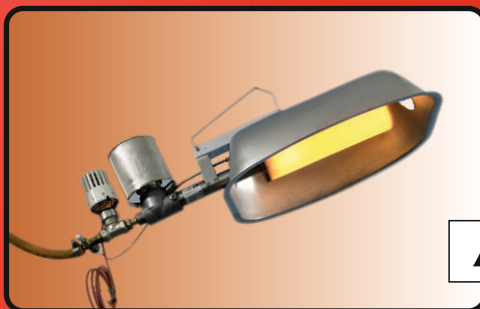
Ceramic

Type 81



Stainless Steel

Global



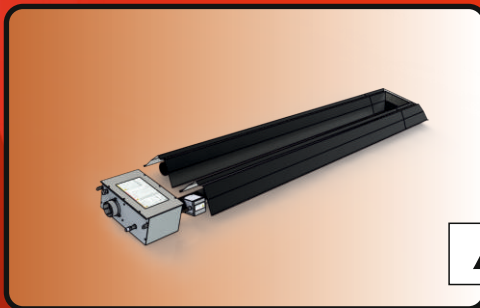
Stainless Steel

AP 2



Canope

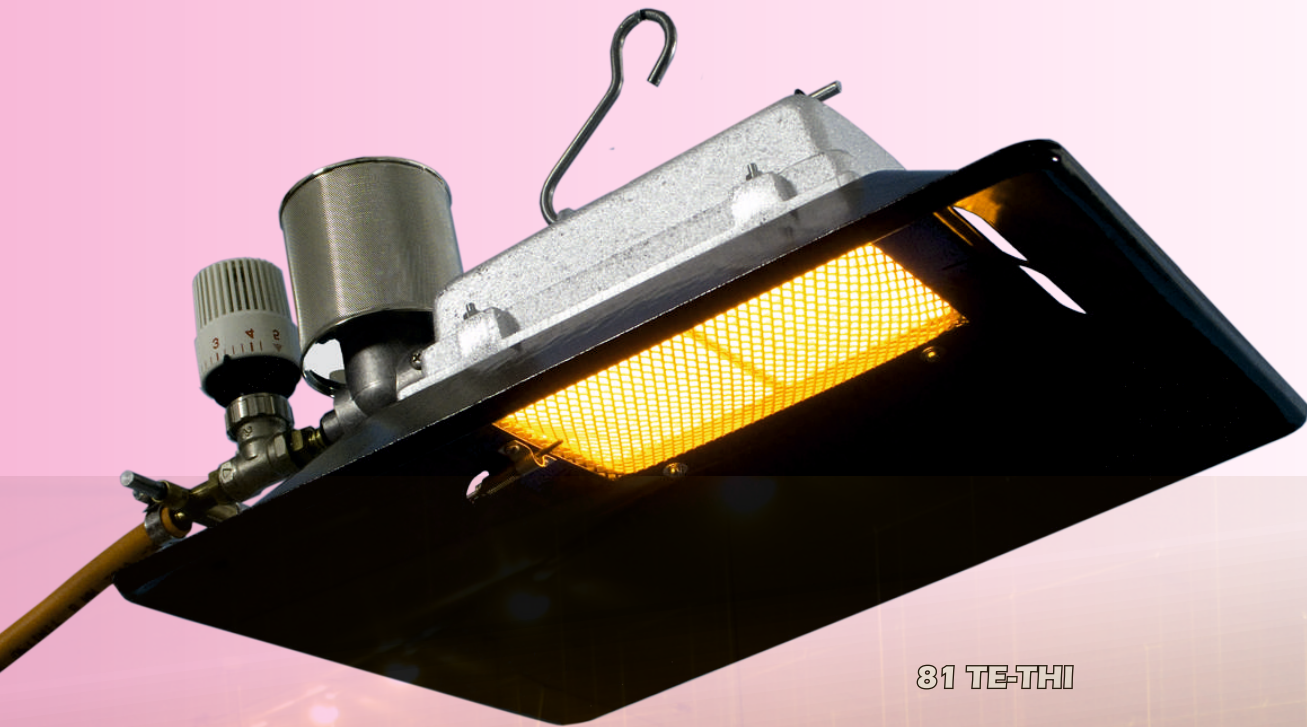
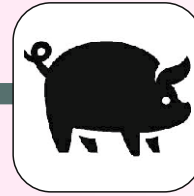
Megasun



Black Tube

AK-HL





81 TE-THI





CERAMIC 81 series

gas brooders

The ALKE ceramic gasbrooders are a very reliable solution for heating in live-stock environments. Not only poultry but also pigs- and cattle housing can be very well heated with these gasbrooders.

Although the ALKE ceramic gasbrooder is a classic design, it has proofed to be very sustainable and reliable.

81 SK-TE

Gas	P (mBar)
Propane	50
	50 - 150
	300 - 1400
Nat. Gas	25
	50

Capacity	1500-3000	Kcal/hr
	1740-3500	Watt
Consumption	240	gr/h
	0,4	m3/h
Weight	4,6	Kg

Dust Filter

Thermo Electric
Safety Valve



81 SK-TE-TH

Gas	P(mBar)
Propane	50
	150
	1400
Nat. Gas	25
	50

Capacity	1500-3000	Kcal/hr
	1740-3500	Watt
Consumption	240	gr/h
	0,4	m3/h
Weight	4,6	Kg

Dust Filter

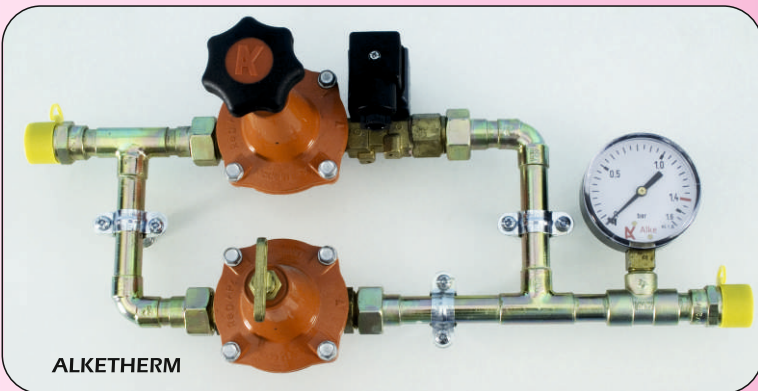
Thermo Electric
Safety Valve

Thermostat Capilar



For every situation we have developed an appropriate control device.

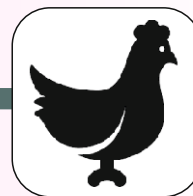
The ALKEtherm regulation systems are a very efficient way to regulate the heaters and in the same time offer all the safety and energy savings you need.



ALKETHERM



The entire scope of equipment for the ALKE heaters is extensive! From quick-couplers, pressure regulators to thermostat. You want it, we have it! That ensures you that you will have a complete heating solution for your needs.



GLOBAL 8 TE-MK-



GLOBAL 5 TE-TH





Stainless Steel Gas Brooders

Global has been designed with a special shape. The spherical gasburner emits infrared rays into an even round structure, radiating heat evenly on the brooding area.

The Global has a double gasburner which combusts dust and without leaving any residue in the small burner.

However, in case of very dusty environments you can choose the "DS" option which has two dustfilters mounted.

- Two spherical gasburners of stainless, and heat resistance steel.
- Optional double airfilter
- Stainless steel reflector
- Spherical gasburner that sends all generated heat toward the ground
- Optional individual capillary thermostatic valve, registering temperature on floor level.
- No electricity required
- Uniform temperature, without drastic variations
- Better distribution of the heat without obstacles.



TE

Thermo Electric Safety Valve
Centrally Controlled

	Gas	P (mBar)	Cap. (kW)	gr/h	m3/h	Weight (kg)
5	Nat.gas	10/300	0,68/5,2	-	0,06/0,58	2,2
	Propane	20/1400	0,55/5,5	36/390	-	2,2
8	Nat.gas	10/300	1,0/8,8	-	0,33/0,88	3,7
	Propane	20/1400	1,2/8,7	60/620	-	3,8



TE-TH(I)

Thermo Electric Safety Valve - Thermostat (Capilar)
Independent proportional controlled

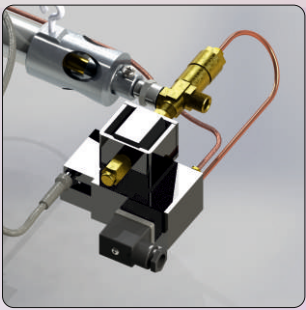
	Gas	P (mBar)	Cap. (kW)	gr/h	m3/h	Weight (kg)
5	Nat.gas	300	0,68/5,2	-	0,06/0,58	2,2
	Propane	1400	0,55/5,5	36/390	-	2,2
8	Nat.gas	300	1,0/8,8	-	0,33/0,88	3,7
	Propane	1400	1,2/8,7	60/620	-	3,8



TE-DS

Thermo Electric Safety Valve - Dual filter
For very dusty environments

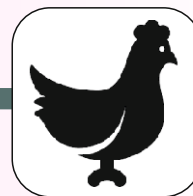
	Gas	P (mBar)	Cap. (kW)	gr/h	m3/h	Weight (kg)
5	Nat.gas	10/300	0,68/5,2	-	0,06/0,58	2,2
	Propane	20/1400	0,55/5,5	36/390	-	2,2
8	Nat.gas	10/300	1,0/8,8	-	0,33/0,88	3,7
	Propane	20/1400	1,2/8,7	60/620	-	3,8



EID

Thermo Electric Safety Valve - Electronic ignition

	Gas	P (mBar)	Cap. (kW)	gr/h	m3/h	Weight (kg)
8	GLP	0-300	0 / 8,5	0/605	-	3,8
	Nat.gas	0-300	0 / 8,5	-	0/0,81	3,7



AP 2 SK-TE-TH





AP 2 series

Stainless Steel gasbrooders



AP 1 SK-TE

Dust Filter - Thermo Electric

Gas	P (mBar)	Cap. (Watt)	Cap. (Kcal)	gr/h	m3/h	Weight(Kg)
Propane	5 - 300	100 - 1000	86 - 860	76	-	1,0
	20 - 1400	100 - 1000	86 - 860	76	-	1,0
Nat. Gas	25 - 50	100 - 1000	86 - 860	-	0,12	1,0
	5 - 300	100 - 1000	86 - 860	-	0,12	1,0



AP 2 SK-TE

Dust Filter - Thermo Electric

Gas	P (mBar)	Cap. (Watt)	Cap. (Kcal)	gr/h	m3/h	Weight(Kg)
Propane	25 - 300	500 - 5000	430 - 4300	360	-	1,5
	20 - 1400	500 - 5000	430 - 4300	360	-	1,5
Nat. Gas	25 - 50	1000 - 3000	430 - 4300	-	0,58	1,5
	5 - 300	1000 - 3000	430 - 4300	-	0,58	1,5



AP 2 SK-TE-TH(I)

Dust Filter - Thermo Electric -
Thermostat (Capilar)

Gas	P (mBar)	Cap. (Watt)	Cap. (Kcal)	gr/h	m3/h	Weight(Kg)
Propane	300	500 - 5000	430 - 4300	360	-	1,5
	1400	500 - 5000	430 - 4300	360	-	1,5
Nat. Gas	25 - 50	1000 - 3000	430 - 4300	-	0,44	1,5
	300	1000 - 3000	430 - 4300	-	0,44	1,5



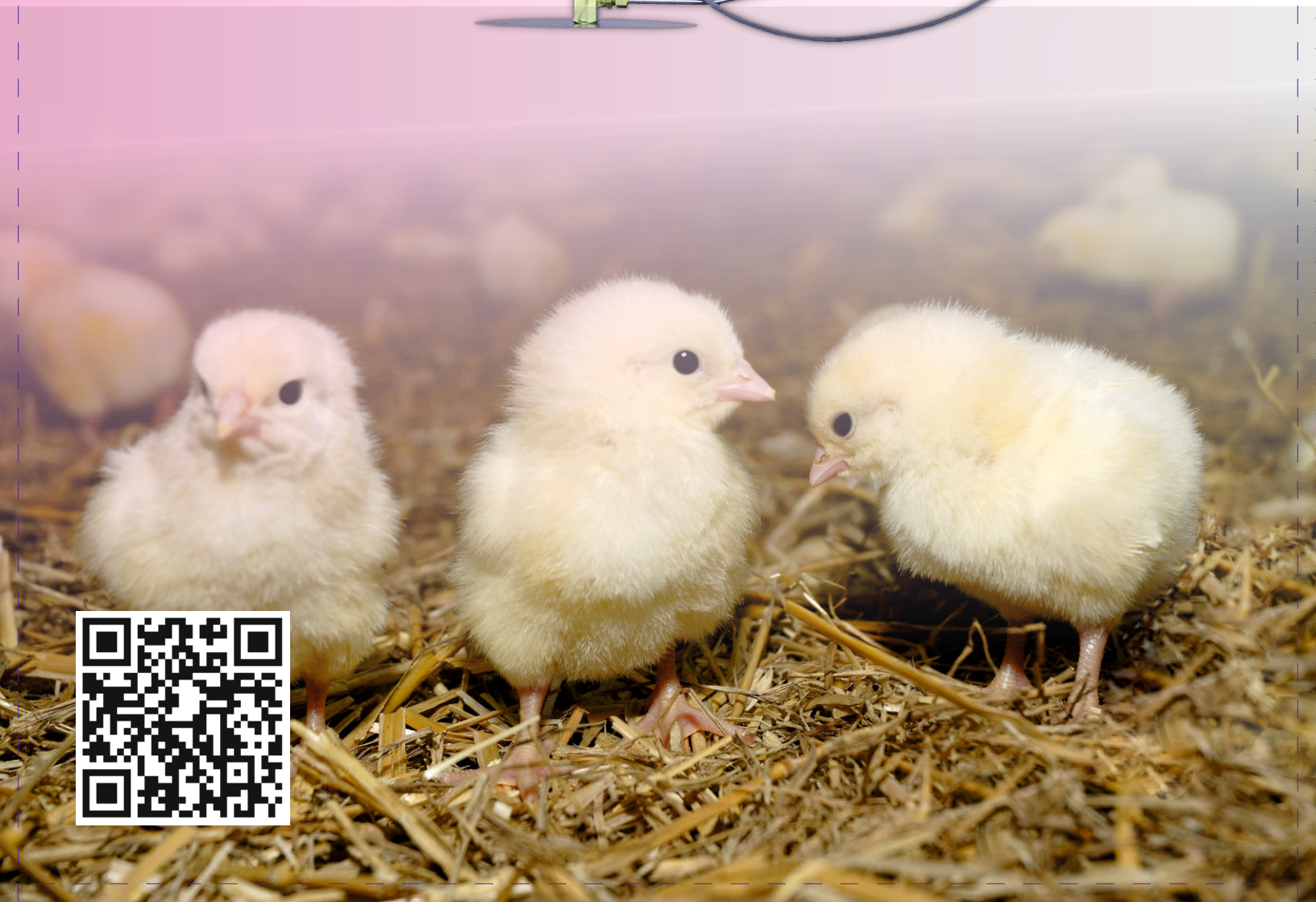
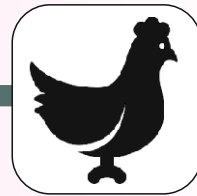
AP 3 SK-TE

Dust Filter - Thermo Electric

Gas	P (mBar)	Cap. (Watt)	Cap. (Kcal)	gr/h	m3/h	Weight(Kg)
Propane	300	200 - 1750	172 - 1510	130	-	1,0
	20 - 1400	200 - 1750	172 - 1510	130	-	1,0

Options





Megasun

Megasun 12 -WVLTH

An individual, non-electric, fully automatic ON/OFF control with integral thermostat, which operates on millivolts generated by the pilot. No electrical supply is needed. Integral thermostat features a wide temperature range for easy adjustment. 100% gas safety shut-off valve.



Megasun 12 - WVLMK24 / WVLMK230

For single or multi-zone installations using central or multiple thermostats, available in 24V or 230V version. The 24-volt AC, zone-type control also can operate on DC voltage as a back up. The gas valve includes a built-in regulator. A 24V or 230V power supply is required. Brooder can be operated by a thermostat, computer or an environmental controller. 100% gas safety shut-off valve.

Megasun 12 EID

Designed for single or multi-zone installations using one or more thermostats. A Zone Control is required to provide a 24-Volt power supply to each brooder. The burner is controlled with a Electronic Ignition Device (EID) switch, which is designed to provide 100 percent gas shut off of the main valve in the event that the main burner flame is not sensed.



WVLMK & WVLTH

Pilot flame - Solenoid valve
Pilot flame - Thermostat

Gas	P (mBar)	Cap. (kW)	gr/h	m3/h	Weight(Kg)
Propane	30-50	12,3	880	-	12
Nat.Gas	15-50	12,3	-	1,15	12

EID

Electronic Ignition

Gas	P (mBar)	Cap. (kW)	gr/h	m3/h	Weight(Kg)
Propane	30-50	12,0	860	-	14,1
Nat.Gas	15-50	12,0	-	1,12	14,1



Gas-fired, 2 stage, infrared heaters

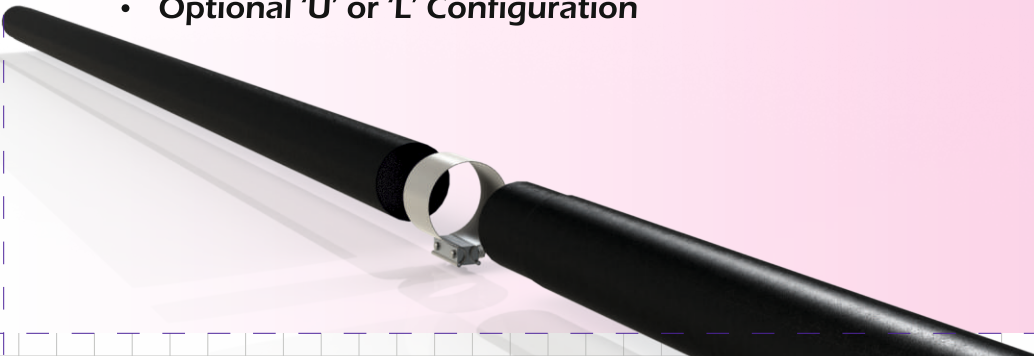
AK-HL Series

Model Number	High Fire Rate	Low Fire Rate	Length (Installation Kit)			Combustion Chamber	Radiant Tubes
AKHL-20	20 kW	15 kW	6m (20-kit)	9m (30-kit)	12m (40-kit)	Aluminized	Aluminized or HRT
AKHL-75*	22,1 kW	15,6 kW	6m (20-kit)	9m (30-kit)	12m (40-kit)	Aluminized	Aluminized or HRT
AKHL-25	25 kW	15 kW	6m (20-kit)	9m (30-kit)	12m (40-kit)	Aluminized	Aluminized or HRT
AKHL-100*	29,4 kW	20,8 kW	X	9m (30-kit)	12m (40-kit)	Aluminized	Aluminized or HRT
AKHL-30	30 kW	20 kW	9m (30-kit)	12m (40-kit)	15m (50-kit)	Aluminized	Aluminized or HRT
AKHL-35	35 kW	30 kW	X	12m (40-kit)	15m (50-kit)	Aluminized	Aluminized or HRT
AKHL-40	40 kW	30 kW	12m (40-kit)	15m (50-kit)	18m (60-kit)	Aluminized	Aluminized or HRT
AKHL-150*	44,1 kW	31,2 kW	12m (40-kit)	15m (50-kit)	18m (60-kit)	Titanium & Aluminized	Aluminized or HRT
AKHL-45	45 kW	30 kW	12m (40-kit)	15m (50-kit)	18m (60-kit)	Titanium & Aluminized	Aluminized or HRT
AKHL-50	50 kW	35 kW	12m (40-kit)	15m (50-kit)	18m (60-kit)	Titanium & Aluminized	Aluminized or HRT
AKHL-50	50 kW	35 kW	X	X	21m (70-kit)	Titanium & Aluminized	Aluminized or HRT
AKHL-175*	51,5 kW	36,4 kW	15m (50-kit)	18m (60-kit)	21m (70-kit)	Titanium & Aluminized	Aluminized or HRT
AKHL-55	55 kW	40 kW	15m (50-kit)	18m (60-kit)	21m (70-kit)	Titanium & Aluminized	Aluminized or HRT
AKHL-60	60 kW	45 kW	15m (50-kit)	18m (60-kit)	21m (70-kit)	Titanium & Aluminized	Aluminized or HRT

The AK-HL Series, packed with quality features, represents today's most energy efficient line of infrared tube heaters. Our patented two stage technology, incorporated into the AK-HL Series, provides more comfort while saving valuable energy dollars. In addition, the highest quality materials and construction features ensure years of reliable and efficient operation. No other infrared heater can match the performance and quality of the AK-HL Series.

Product Features:

- Inputs of 19.0 to 60.0 kw
- Available in Tube Lengths of 6710 mm to 21335 mm
- Coated Titanium or Aluminized Combustion Chamber
- Coated Aluminized or Optional Economy Hot Rolled Steel Radiant Tubes
- Patented Two-Stage Technology
- Highly Polished Aluminum Reflectors
- Stainless Steel Burner
- Spark Ignition System
- Enameled Control Box
- Operational Indicator Lights
- Optional #3 Brushed Stainless Steel Control Box
- Optional 'U' or 'L' Configuration

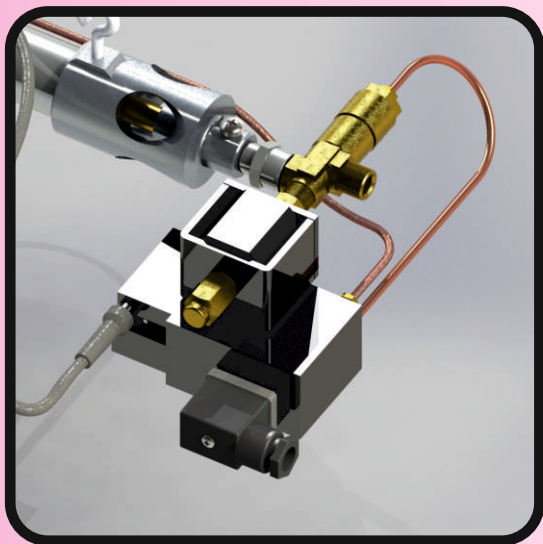




GLOBAL EID

Electronic Ignition
For a
Low gas consumption

NEW



ALKE BV - Industrielaan 11a - 3925 BD Scherpenzeel - The Netherlands

☎ +31 (0)33 277 3824 ☎ +31 (0)33 277 3080 ✉ info@alke.nl

🌐 www.alke.nl